

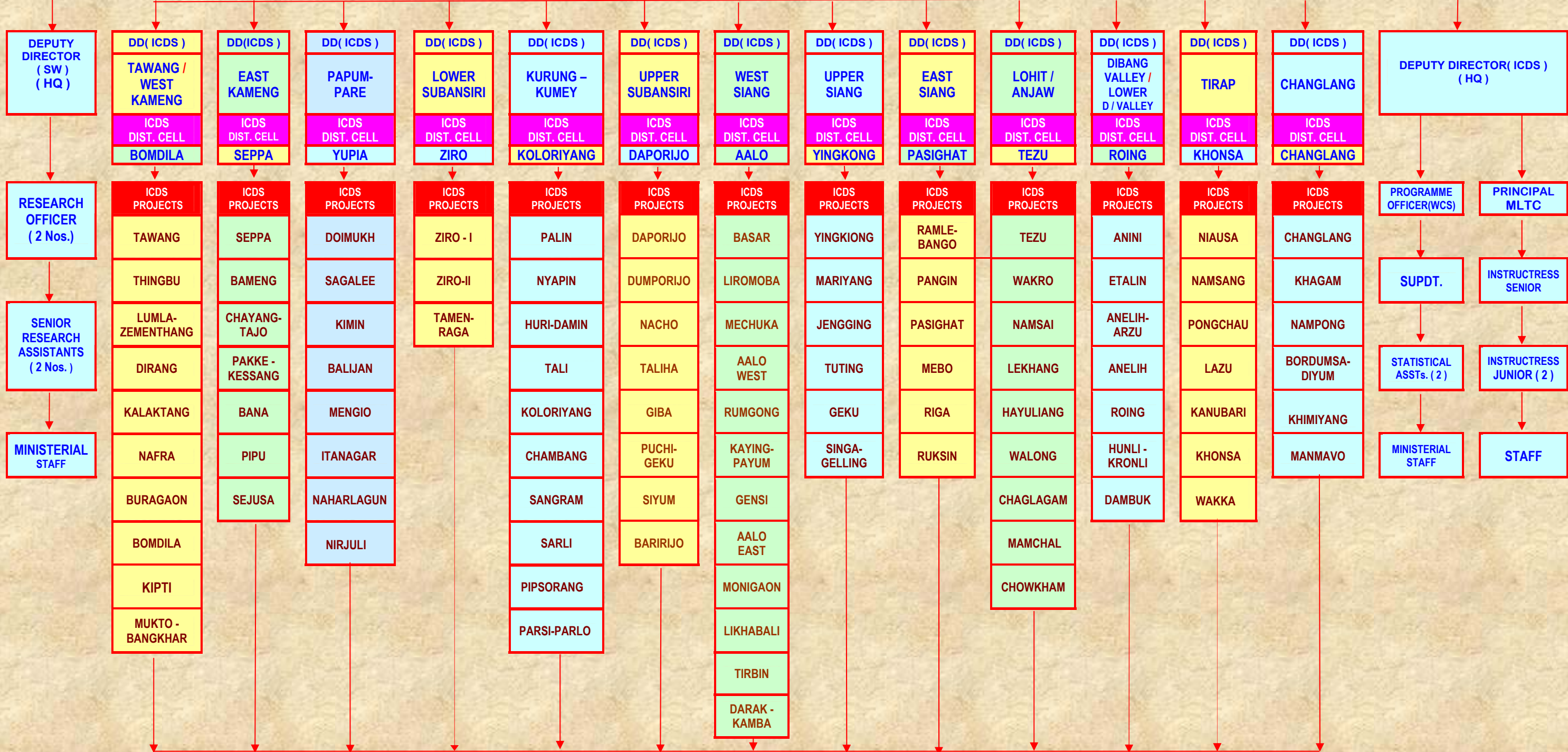
ORGANISATIONAL SET-UP OF SOCIAL WELFARE, WOMEN AND CHILD DEVELOPMENT DEPARTMENT, GOVERNMENT OF ARUNACHAL PRADESH

SECRETARY
Social Welfare, Women and Child Development Department

JOINT SECRETARY
Social Welfare, Women and Child Development Department

DIRECTOR
Social Welfare, Women and Child Development Department

JOINT DIRECTOR (ICDS) (HQ)



each DD's Staffing Pattern
Supdt.(7 Nos.) / Statistical Asstt. / Head Asstt. / UDC / LDC / Driver / Peon

each CDPO's Staffing Pattern
SA / Supervisor or EO(WCS) / UDC / LDC / Driver / Peon / Gramasevikas / Anganwadi Workers / Helpers